

CERTIFICATE OF LOCATION OF GOVERNMENT CORNER

NORTHWEST Corner of Section 12, Township 107N, Range 40W

5th Principal Meridian, State of Minnesota, County of MURRAY

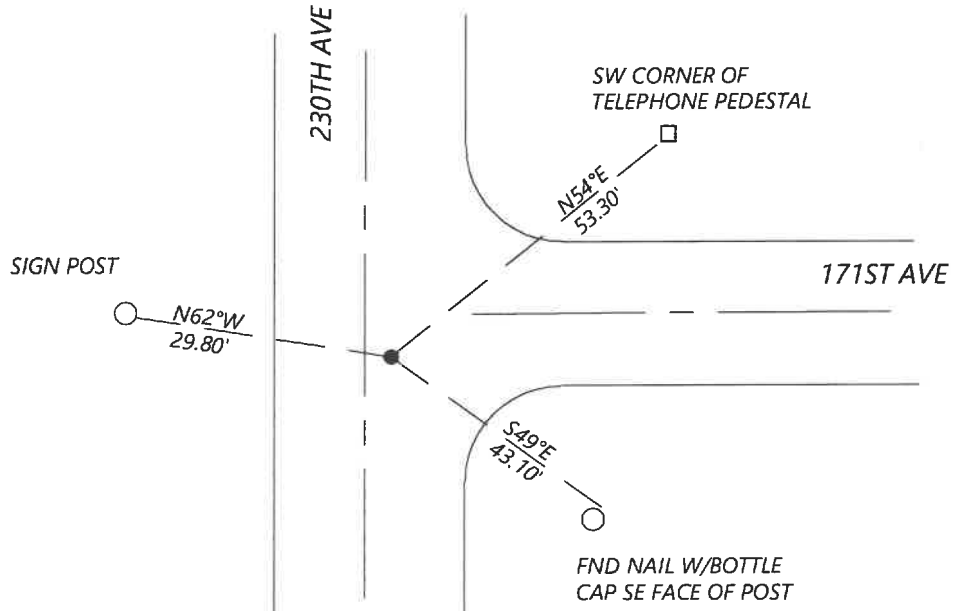
At the corner location shown on the sketch:

On 8/26/2020 found a REBAR WITH CAP JOHNSON LS 50343 DOWN 0.4FT
DATE

left monument as found lowered monument removed monument (explain)

On _____ placed a _____
DATE

SKETCH OF REFERENCE TIES



N.T.S.

Statement of evidence for this corner location is on back of this page.

I hereby certify that this document was researched and prepared by me or under my direct supervision and that I am a licensed Land Surveyor under the laws of the State of Minnesota.

Signature [Handwritten Signature]

Date 6/16/2021 License No. 45874

Title:

- Land Surveyor Professional Engineer
- County Surveyor County Engineer

OFFICE OF THE COUNTY RECORDER

County of Murray

I hereby certify that this document was filed in the Co.

Recorder's office at _____ M. on the _____ day of _____ A.D. 20 _____

County Recorder [Handwritten Signature] by JUN 22 2021, Deputy

DOCUMENT NO. _____

JASON LATZKE
Minnesota License No. 45874

Statement of Evidence:

Northwest Corner of Section 12, Township 107 North, Range 40 West, 5th Principal Meridian, Murray County, Minnesota.

GLO - JULY, 1861

MAY 27, 2016 - HWY DEPT RECORDS SHOW THAT THEY LOCATED A NAIL AT THE CENTER OF INTERSECTIONG ROADS. COORDINATES LISTED N 189888.06 E 543093.15

APRIL 25, 2017 - CORNER CERTIFICATE FILED BY LS 50343 SHOWS THAT THEY DUG WITH A BACKHOE AND FOUND A STONE OVER ANOTHER STONE. SET 5/8" IRON WITH SEAL #50343 OVER THEM. MURRAY COUNTY COORDINATES N 189887.61 E 543092.76.

SEPTEMBER 2020 - WESTWOOD PROFESSIONAL SERVICES SEARCHED AND FOUND A REBAR WITH CAP #50343 AND ALSO 1 REFERENCE TIE FROM 2017 CORNER CERTIFICATE. I ACCEPTED THE FOUND MONUMENT AND ESTABLISHED ADDITIONAL REFERENCES.

Analysis of the recovered data, field evidence and survey measurements, indicates that the monument found is the correct perpetuation of this corner. For additional information concerning this corner please contact Westwood Professional Services.